

Flat Cable EMI Suppression Cores (RP Series)

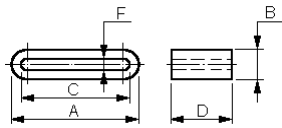
Description :

RP Series is a EMI suppression core with flat shape. It's mainly used for the flat cable like FFC (Flexible Flat Cable) or FPC (Flex Printed Circuit) to suppress the electromagnetic noise through the cable in electric equipments. Due to this flat design, this ferrite core can be located in a narrow space inside the equipment very easily.

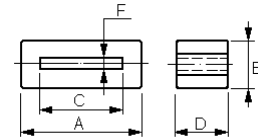
RoHS 2.0
2011/65/EU

Applications :

- Suppress high frequency noise from flat cables to compliance with FCC, VDE and VCCI.
- Suitable for FPC or FFC cables inside the equipments.
- Widespread use for electric equipments like NBs, PCs, printers, monitors, scanners, digital cameras, DVD players, fax machines, Audio products, Video Products, and etc.



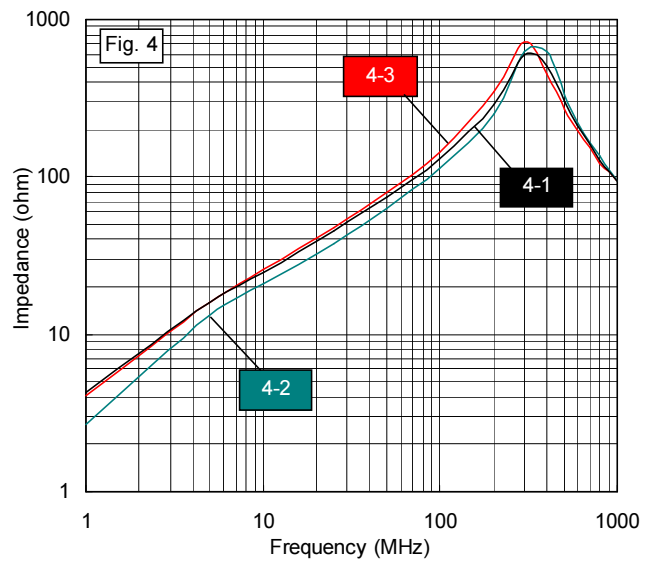
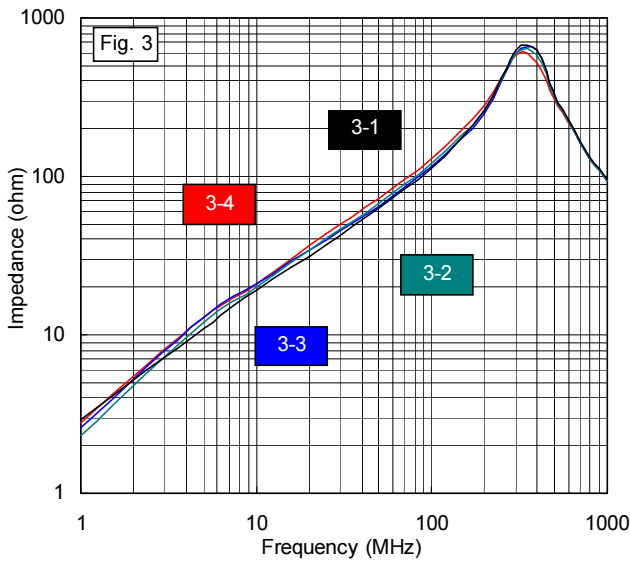
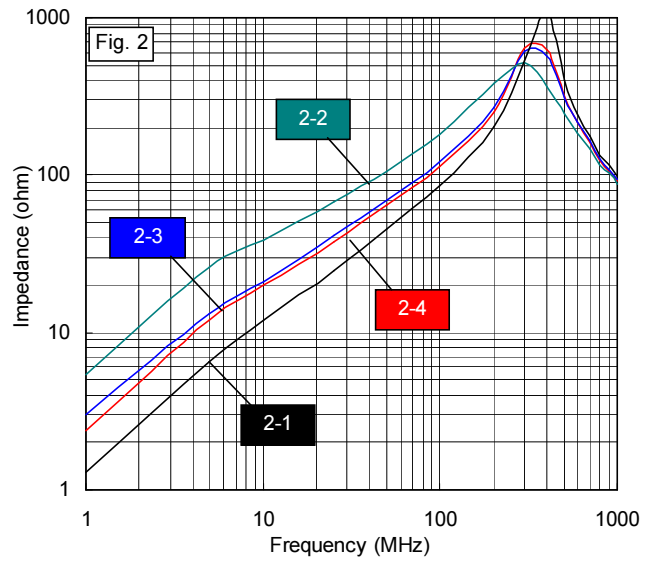
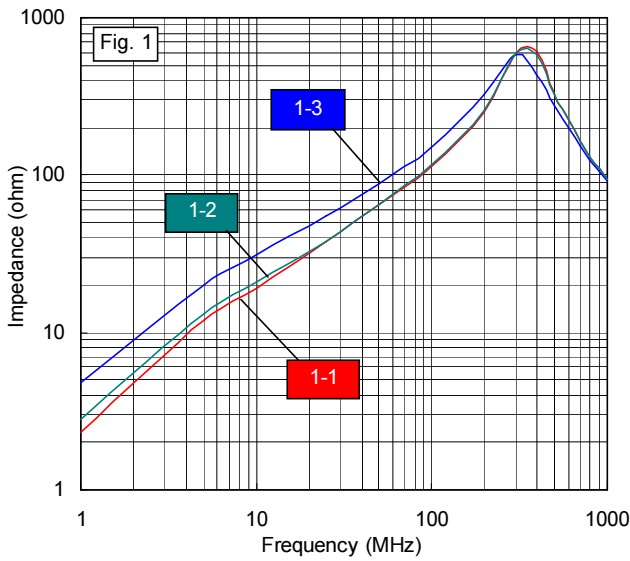
Shape. A



Shape. B

Part Number		Other Dimensions (mm)		Typical Impedance (ohm)		Shape	Z-F Fig
Material	RP AxBxD (mm)	C	F	25MHz	100MHz		
L92	RP 23.3x3x7	20	0.9	24	83	B	2-1
L92	RP 23.3x3x12	20	0.9	36	112	B	3-1
L92	RP 24.5x4.7x12	20	0.8	44	127	A	4-1
L92	RP 28.5x6.5x8	23.5	0.9	38	115	A	1-2
L92	RP 28.5x6.5x18	23.5	0.9	69	184	A	2-2
L92	RP 31x5x12	27	1.0	40	120	A	3-2
L92	RP 33.5x6.5x12	27	1.4	40	115	A	4-2
L92	RP 33.5x6.5x20	27	1.4	55	145	A	1-3
L92	RP 38.5x4x12	35	0.8	40	113	A	2-3
L92	RP 40x6.5x12	35	1.4	38	110	A	3-3
L92	RP 45.2x6.5x12	40	1.4	38	114	A	1-1
L92	RP 49.6x6.5x12	44	1.4	38	113	A	2-4
L92	RP 57.6x6.5x12	52	1.4	41	121	A	3-4
L92	RP 60x12x12.7	48.5	2.2	46	136	B	4-3

Flat Cable EMI Suppression Cores (RP Series)



Note :

1. Above test condition is a diameter 0.4mm with 10cm length wire through the core to compare the impedance for reference.
2. For actually application, the wire length and diameter is different and impedance reading will not the same.

